



MONTHLY MEMBERSHIP PROGRESS REPORT

District 5M 13

Results as of: 10/31/2014

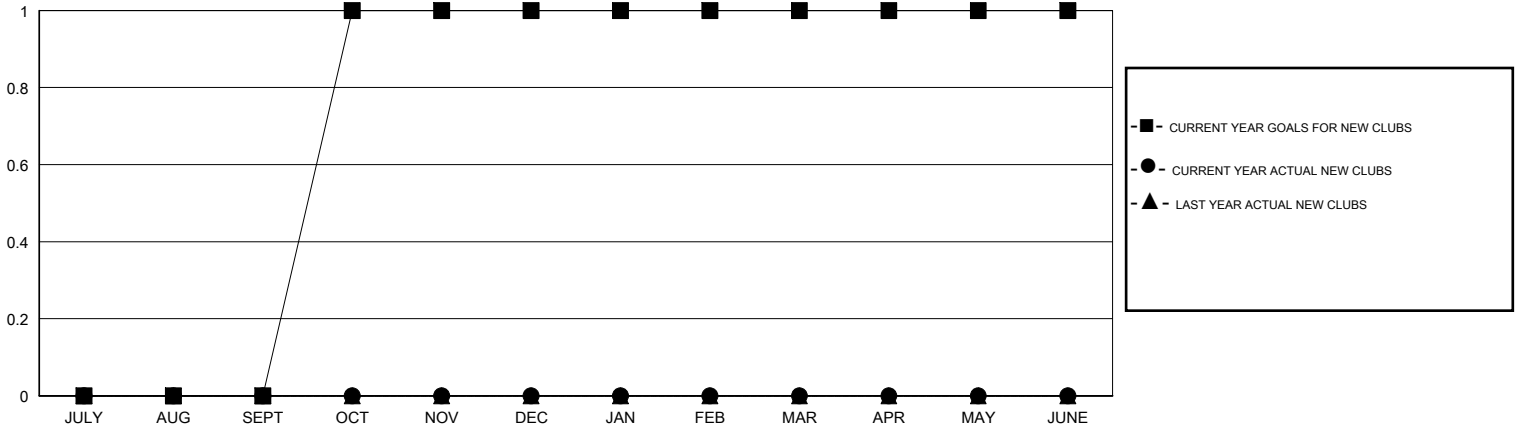
GMT: DENNIS STEVENSON

LOCATION MANITOBA

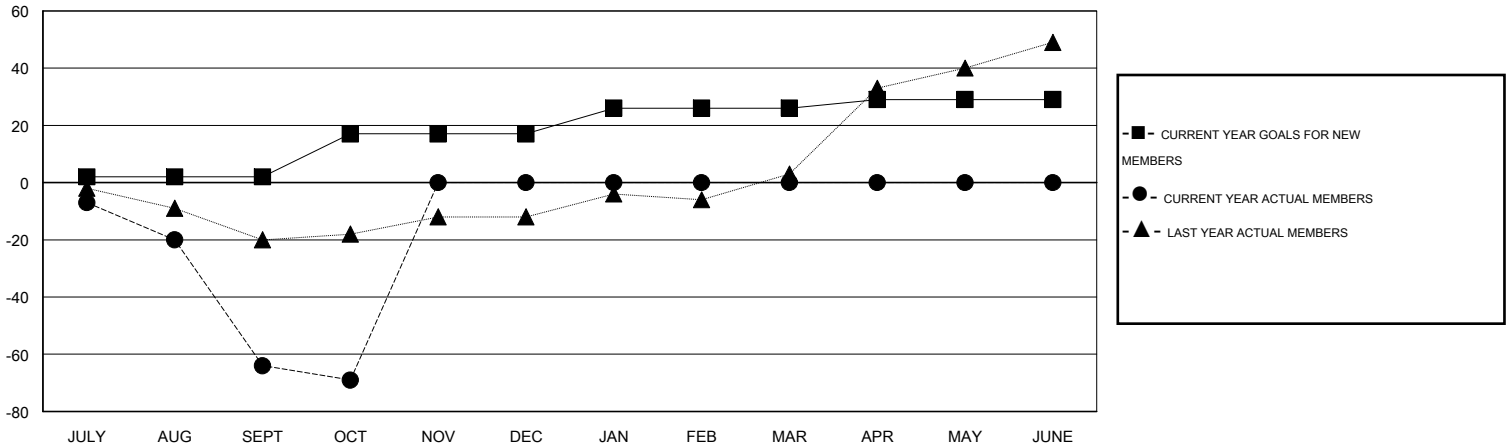
GMT CA 2

Clubs					Members				
RESULTS FOR 2014-2015					RESULTS FOR 2014-2015				
QUARTER	NEW CLUB GOAL	NEW CLUBS	DROPPED CLUBS	NET GAIN/LOSS	QUARTER	NEW MEMBER GOAL	CHARTER AND NEW MEMBERS ADDED	DROPPED MEMBERS	NET GAIN/LOSS
JULY/AUG/SEPT	0	0	2	-2	JULY/AUG/SEPT	2	3	67	-64
OCT/NOV/DEC	1	0	0	0	OCT/NOV/DEC	15	5	10	-5
JAN/FEB/MAR	0	0	0	0	JAN/FEB/MAR	9	0	0	0
APR/MAY/JUNE	0	0	0	0	APR/MAY/JUNE	3	0	0	0

GOALS AND ACTUAL NEW CLUBS CUMULATIVE



GOALS AND ACTUAL MEMBERS CUMULATIVE



DROPPED CLUBS: 2	5 CLUBS OF 61 ADDED 1 OR MORE NEW MEMBERS	GENDER DISTRIBUTION
		MALE 944 (77.31%)
		FEMALE 277 (22.69%)
DROPPED MEMBERS	CLICK HERE FOR HEALTH ASSESSMENT DATA	FAMILY UNIT MEMBERS 197
DECEASED 5		HEAD OF HOUSEHOLD 98
CLUB CANCELLED 0		NON-HEAD OF HOUSEHOLD 99
OTHER 72		
TOTAL 77		